

# YURT OPTIONS

**Lodgepole Pine Rafters** — These beautiful round rafters are sanded and stained, and add strength and beauty to any yurt. They are standard with the 28' model and an optional extra on all other sizes. These rafters are our most popular option.

**Heavy Duty Top Cover** — This is a 22 oz. vinyl cover made from VinaGARD®, a double-coated fabric made for applications where high strength protection and durability are required. This heavy-duty top cover is necessary only for extreme weather conditions.

**Top Cover & Side Wall Insulation** — Foil bubble rFoil is a layer of polyethylene bubbles bonded to and sandwiched between two Radiant Barrier aluminum Foil sheets. This is the same insulation that was developed by NASA. It is not affected by humidity or condensation in extremes of temperatures and is extremely efficient. Bubble rFoil comes with a 15 year warranty.

**Roof and wall Liners** — Liners are mildew and fungus resistant, fire retardant, non-toxic and non-carcinogenic. With a choice of heavy-duty cotton or vinyl, both in an ivory colour, these can be used together, e.g. cotton on top and vinyl on walls. Liners cover the insulation and give an attractive finish.

**Additional Windows** — Extra windows can be added, in any location, either horizontally or vertically. Specify the placement of windows to highlight the landscape and views on your property, or the interior layout. All windows are removable and include insect screens.

**Glass Windows** — Custom glass windows are available for all models. There are times when an opening glass window is desirable, e.g. for ticket sales when the yurt is used as a sales booth, or simply as an alternate means of ventilation. Standard size is 3ft x 4 ft. double paned glass, sliding window with insect screen. Window kit includes wooden frame and two wall studs.

**Insulated Window Cover** — Reflective Bubble rFoil provides extra window insulation during extremely cold weather. Easy on and off.

**Additional Doors** — Additional doors, in any style, can be added to your yurt. Using a clock face, doors must be placed at 3:00, 6:00, 9:00 and 12:00 o'clock locations. All doors come with the highest quality hardware and lockset with extra keys.



Lodgepole Pine Rafters - hand sanded and stained



24" French Doors



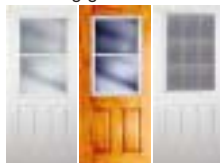
Awnings



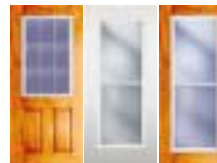
Sliding glass windows



30" French Doors



Doors all have shatter-proof glass



Steps for all sizes



Dome Screen



Different styles of rain diverters are available



Sectional insulated floor

**Door Upgrades** — Door options include a steel door with an opening, shatter-proof glass window and screen, French doors, either 24" or 30"h, and colours of choice.

**Tinted Dome** — We recommend the tinted dome for hot, sunny climates. It offers UV and sun protection and keeps the yurt cooler.

**Snow and Wind Kits** — If you are in a very windy or heavy snow load area, you might want to augment the strength of your yurt. The snow and wind Kit uses vertical studs to reinforce the roof rafters and lattice wall. Yurtco yurts are rated for snow loads in excess of 40 lbs per sq. ft. Cable tie-downs are also available for the yurt platform.

**Stove chimney opening and shield** — Yurtco can build in a stove chimney opening with a shield that will allow you to easily install a wood stove. Our opening fits a 6" chimney pipe.

**Insulated Wood Floor** — Our custom designed, sectional floor makes any yurt truly portable. The insulated floor is a sandwich construction using 4-1/2" thick styrofoam, laminated to exterior grade OSB 5/8" plywood decking. This provides an extremely warm, durable floor. Yurtco will supply a construction diagram and material list to help you build the yurt platform.

**Dome Screen and Insulation** — This screen custom fits the dome and prevents insects, falling leaves, etc. from entering the yurt. The insulation for the dome is useful for blocking the sun whenever it is extremely hot and keeping out the cold in winter.

**Door and Window Awnings** — Custom awnings are available for doors and windows, as per your requirements. Inquire for price.

**Assembly** — An illustrated Installation Manual comes with your yurt purchase. This includes plans for building the yurt platform and step-by-step assembly instructions. To assemble your yurt, we supply all stainless steel hardware for a lifetime corrosion-free finish. Set up time is only a few hours for smaller sizes and up to one or two days for the larger sizes.

**Other options include fireplaces, Sun-Mar Composting toilets, air conditioners and pine furniture.**



Yurtco Manufacturing Inc. 5784 Byrne Road, Burnaby, BC Canada V5J 3J4

Tel: 604-629-2982 | Fax: 604-432-7404 | Toll Free: 1-866-4YURTCO | www.yurtco.com | Email: info@yurtco.com